



SafeZone - Vision-AI Sensing System for Bus Doors



Product Description

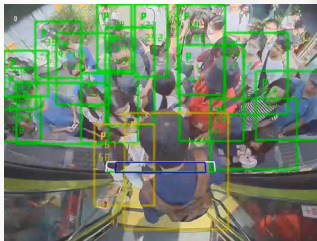
SafeZone is the first AI vision-based anti-pinch sensing system designed for bus door safety, overcoming the blind spots of traditional pneumatic mechanisms. It identifies people in various scenarios—such as holding an umbrella, carrying a backpack, or when only part of a limb is visible—with high accuracy even in crowded or low-light environments. The system provides proactive alerts, door-stop control, and automatic reopening, and has already been deployed on hundreds of buses across Taiwan.

Applications – Anti-Pinch System for Bus Doors

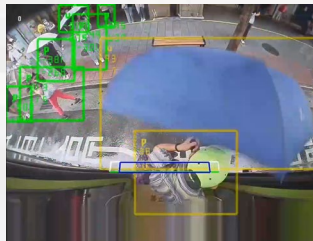
This safety system includes oToBrite's sensing controller and visual perception module, paired with a door controller. The system proactively detects the presence of individuals near the bus door area to prevent injuries caused by the doors closing.

Product Features

- Detects a 30 cm area outside the bus door when it opens.
- Prevents the door from closing if a passenger is detected.
- Stops detection once the door is fully closed.



• Large crowds

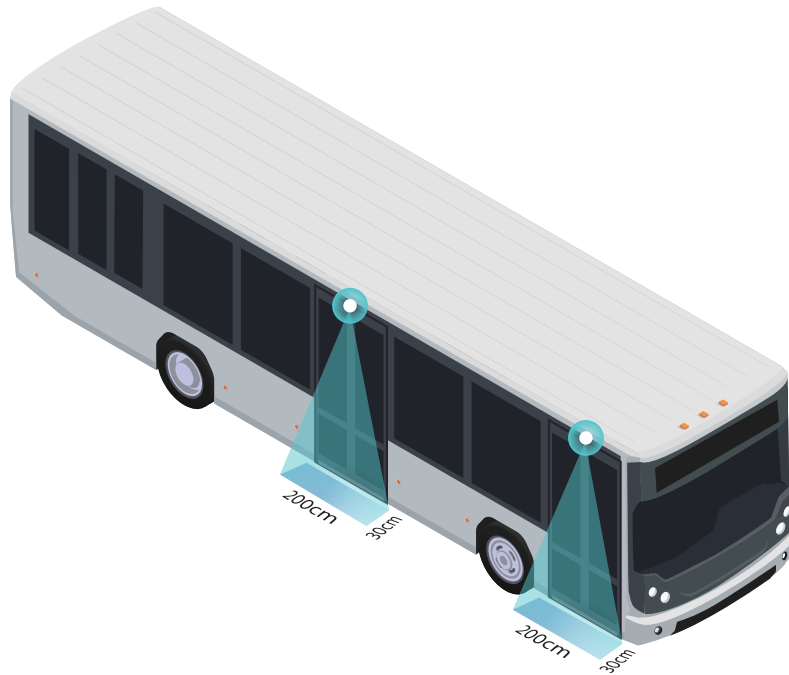


• People carrying umbrellas



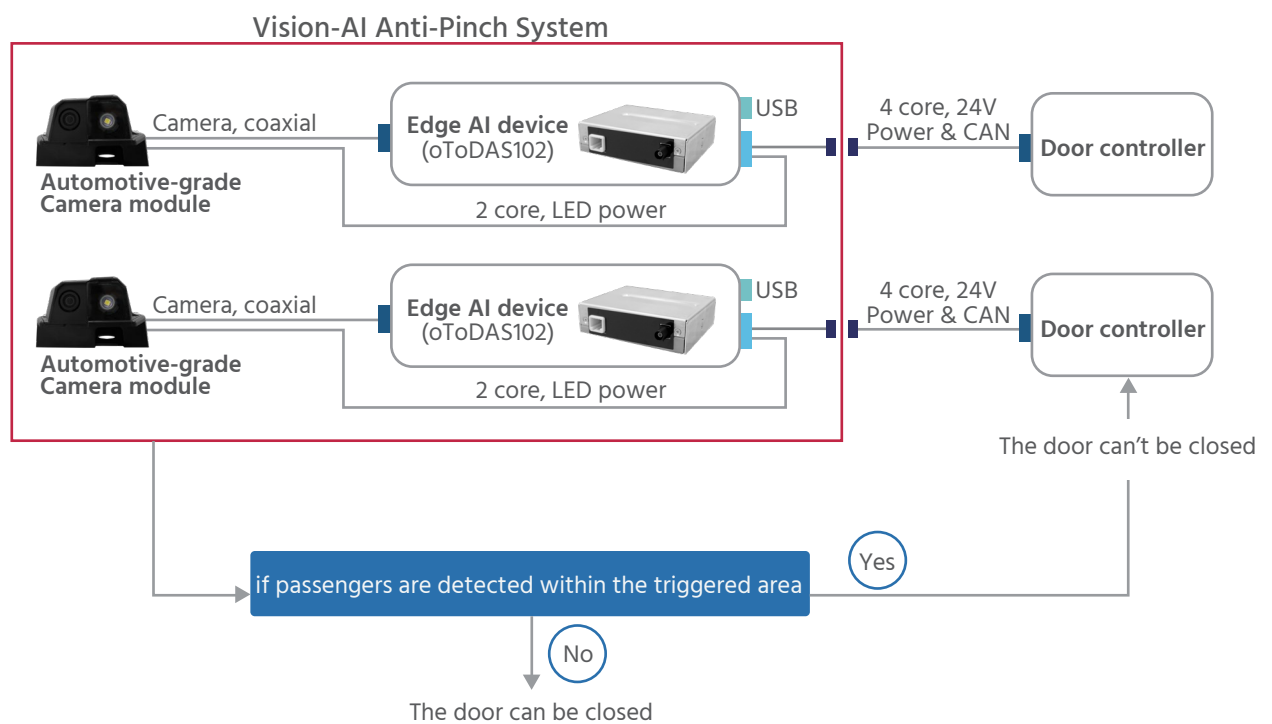
• Partially obscured person

- Target Object: Passengers
- Required Detection Trigger Area: 200 cm x 30 cm outside the bus door.
- Description: The system detects passengers within 30 cm outside the bus door and prevents the door from closing.



Provides the Following Products:

Including sensing controllers, visual perception modules, and wiring harnesses within the red box. The configuration includes one set for the front door and one set for the middle door.



Product Spec. (Customized for different applications)

Sensing Controller (oToDAS102)	Specification
Voltage Range	16V~32V
Operation Temperature	-20°C ~ +70°C
Storage Temperature	-20°C ~ +75°C
Ingress Protection Rating	IP51

Visual perception modules (oToCAM206-L137T+LED Lamp)	Specification
Operating Temperature	-20°C ~ +70°C
Storage Temperature	-20°C ~ +75°C
Ingress Protection Rating	IP69K (Camera)
LED Lamp	In response to the night sensing function, LED lights can be installed depending on the situation

Outline Drawing



driving easier and safer



9F-2, No. 8, Keyan Rd., East Dist., Science-Based Industrial Park,
Hsinchu, Taiwan (R.O.C.)



oToBrite.com



[Facebook](#)



[LinkedIn](#)



[X.com](#)